

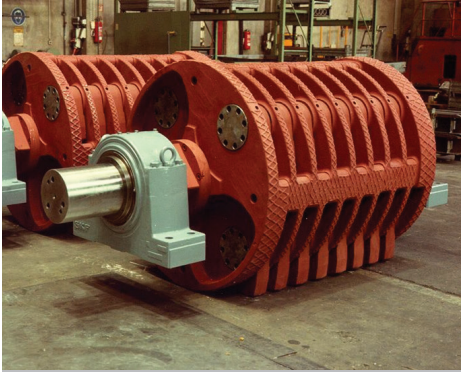
APPLICATIONS FOR MINING



WE SOLVE YOUR WEAR PROBLEMS

Corodur Fülldraht has been an industry leader in the area of wear protection for 35 years.

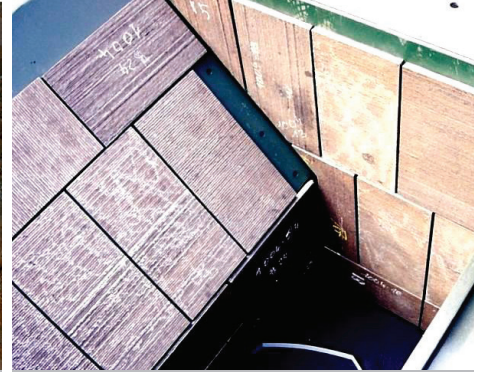
We specialise in the manufacture of high quality consumables for arc-welding and for thermal spraying. The product range includes flux-cored wires for OPEN ARC (FCAW), MIG (MGAW) and submerged arc (SAW) welding. We also supply stick electrodes of equivalent composition as well as a range of tungsten carbide products for the most extreme wear conditions.



DISCS & HAMMERS



GYRATORY CRUSHER



CHUTES



CONES

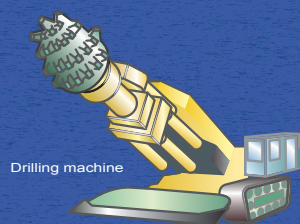


BUCKET EDGE



SIEVES

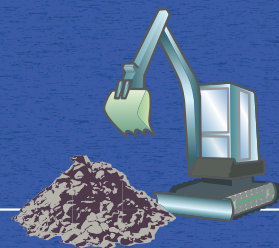
Whatever your requirements throughout the mining process,



Drilling machine



Drag line excavator



Hydraulic shovel

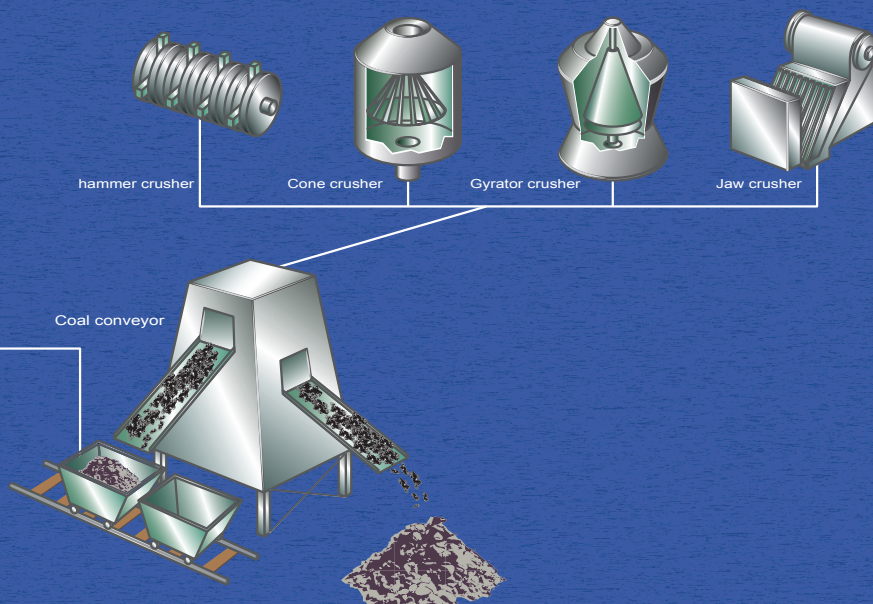
Corodur Solutions for Mining

You can rely on Corodur to provide tailored end-to-end wear protection solutions, allowing you more time to focus on your core business needs. Our qualified and experienced service team will guide you and recommend the right product and method. We develop the best solution for your specific needs.

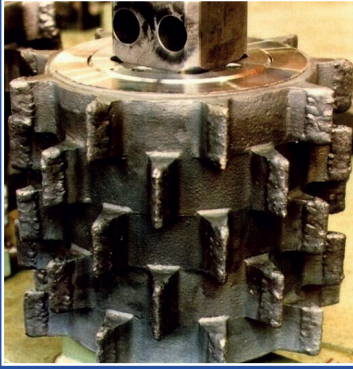
Flux Cored Wires	Hardness	Applications
CORODUR® 250 K	220 – 250 HB	Hammers, Buffer layers
CORODUR® 600 TIC	56 - 58 HRc	Hammers
CORODUR® 55 Mo	57 – 60 HRc	Grinding rollers and tables
CORODUR® 56	58 – 62 HRc	Wear Plates, Tubes, Grinding rolls and tables, Cones
CORODUR® 61	62 – 65 HRc	Wear Plates, Fan, Chutes, Hoppers, Bins
CORODUR® 79	64 – 68 HRc	Sand and concrete pumps, Paddle, Paddle mixer, Kneader, Screw conveyors, Mining, Lignite opencast, Cement and Concrete industry, Mineral processing and slag crusher.

Benefit from our experience and our know-how!

Corodur can provide a solution to suit your specific needs

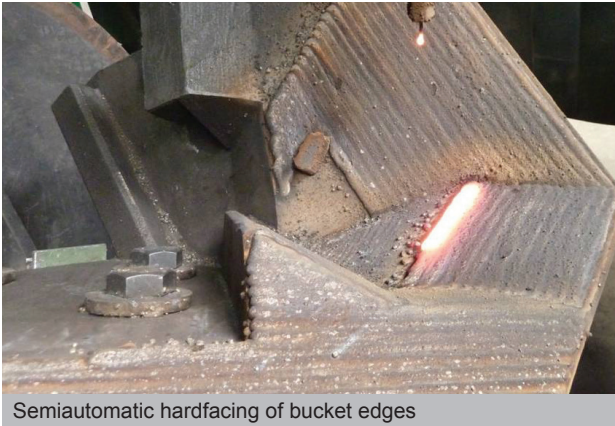


APPLICATION FOCUS

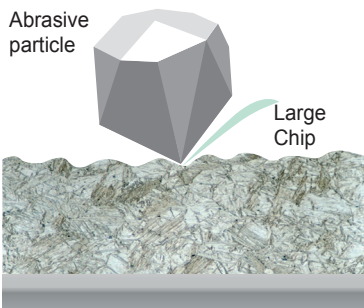


EXTRACTION

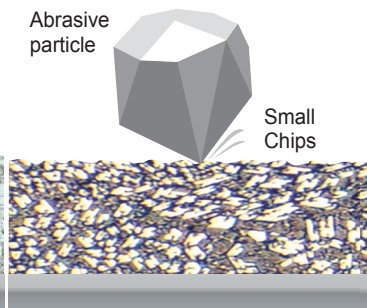
Wear forces encountered during the extraction process cause extreme degradation of buckets, teeth, blades and transporting equipment, chutes, and more. Long downtimes for machinery repairs can cause unexpected costs. Corodur's specially developed products are able to minimize this wear and reduce downtime. Understanding the effects of variable soil and rock compositions requires special geological and metallurgical skills. Our experts can analyse wear situations and recommend the right products from our wide range of flux-cored wires.



Semiautomatic hardfacing of bucket edges

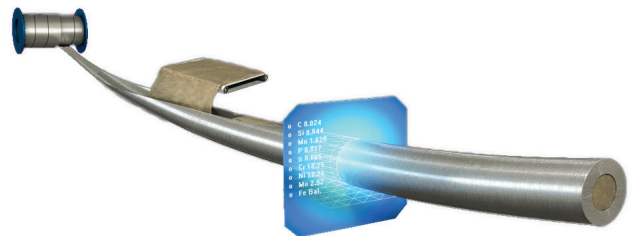
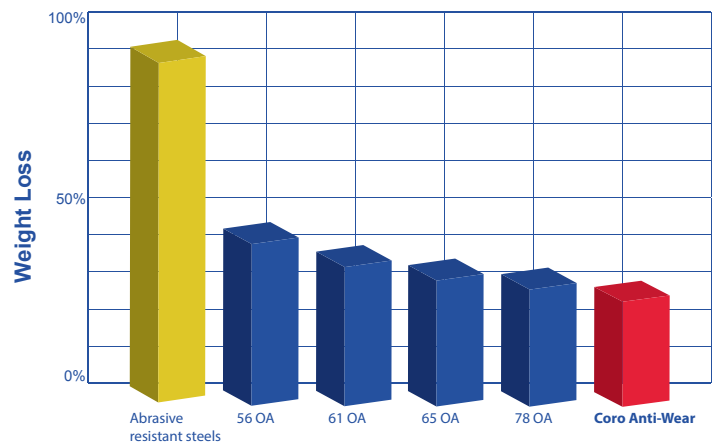


Hardfacing with resistant carbides



Our state-of-the-art product: COROCARB Ni

Abrasive Wear Test ASTM G65



CORODUR
Das Original FÜLLDRAHT GMBH

CORODUR FÜLLDRAHT GMBH
Gießerallee 37
D - 47877 Willich

Telephone: +49 (0) 2154 8879-0
Fax: +49 (0) 2154 8879-79

info@corodur.de | www.corodur.de