

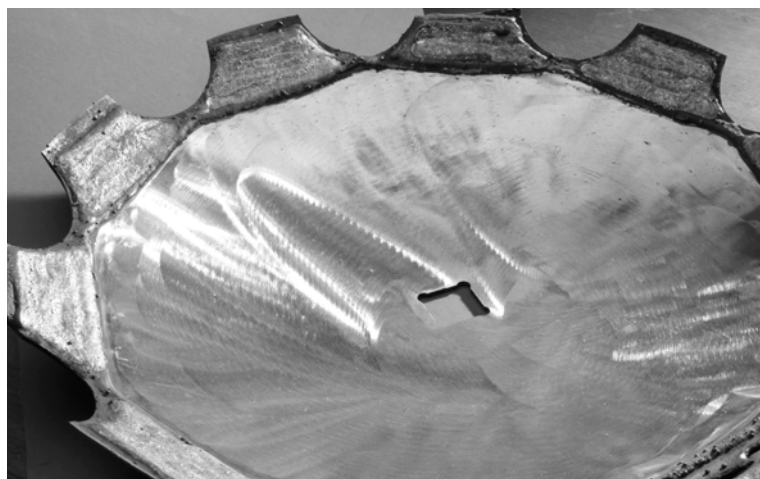
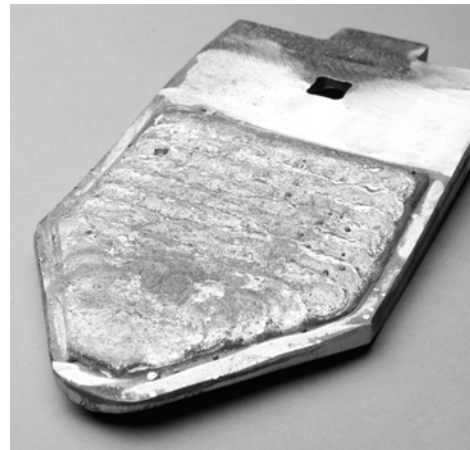
AGRICULTURE



WE SOLVE YOUR WEAR PROBLEMS

Corodur® Fülldraht has been an industry leader in the area of wear protection for 35 years.

We specialise in the manufacture of high quality consumables for arc-welding and for thermal spraying. The product range includes flux-cored wires for OPEN ARC (FCAW), MIG (MGAW) and submerged arc (SAW) welding. We also supply stick electrodes of equivalent composition as well as a range of tungsten carbide products for the most extreme wear conditions.

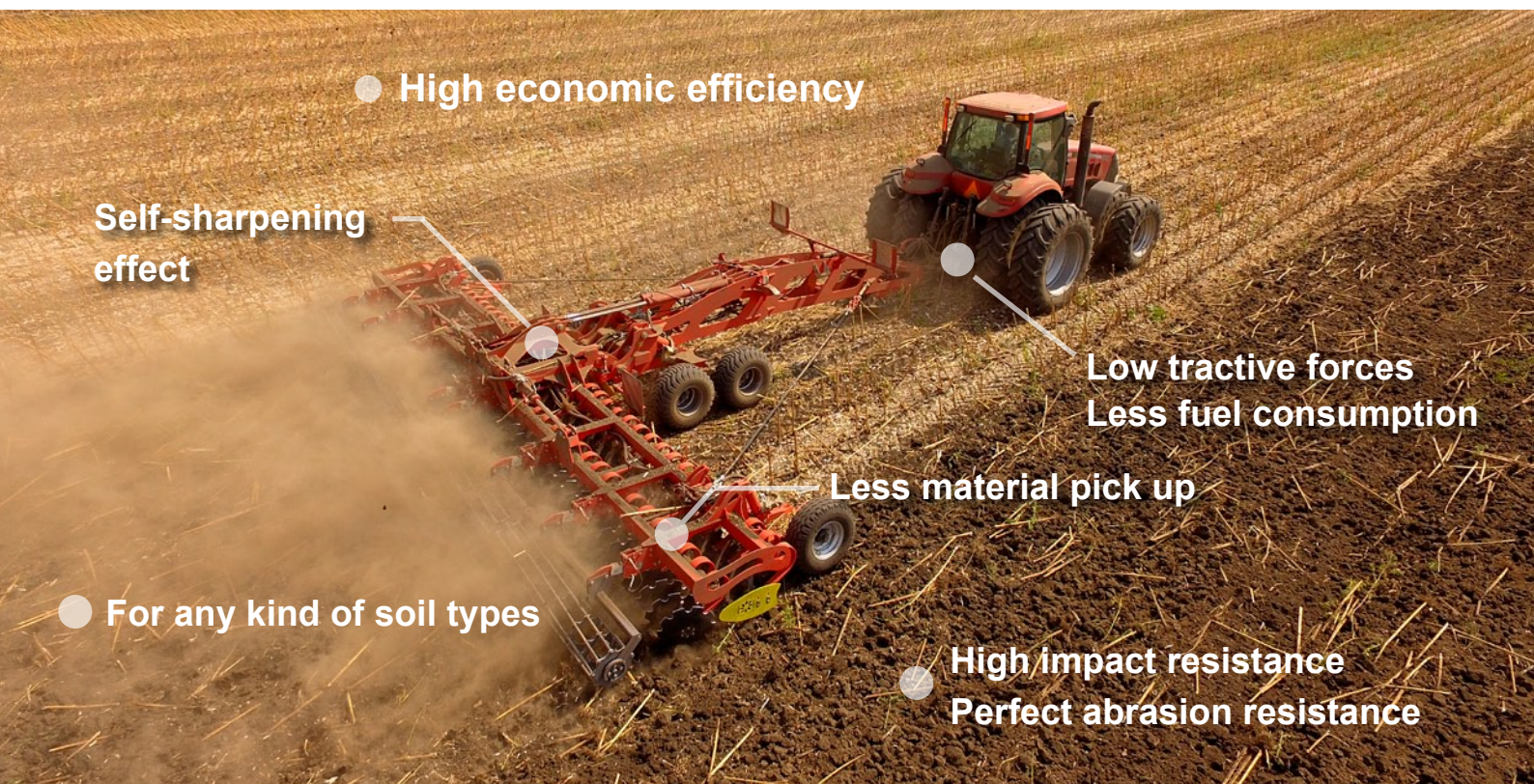


Corodur® provides tailored wear protection solutions for a wide range of components used in the agriculture industry.

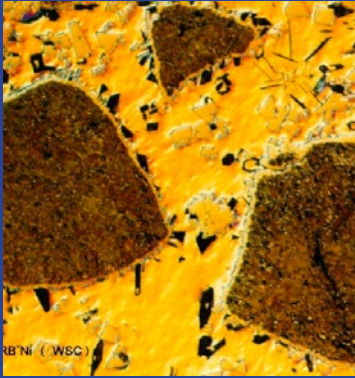
Corodur® Solutions for Agriculture

You can rely on Corodur® to provide tailored end-to-end wear protection solutions, allowing you more time to focus on your core business needs. Our qualified and experienced service team will guide you and recommend the right product and method. We develop the best solution for your specific needs.

PRODUCTS	HARDNESS	GENERAL CHARACTERISTIC
CORODUR 601	55 - 58 HRc	Transport rolls for Sugar Beet Harvester and Beet Loader, Potato Harvester
CORODUR 57	60 - 62 HRc	Flail knives for mowers, scrapers for disc harrows
CORODUR 59	53 - 56 HRc	Corrosion-resistant mixers, compost screws, screw conveyors, biomass screws
CORODUR 60	61 - 63 HRc	Rotary harrow tines, rotor tines, cultivator tines, disc harrows
CORODUR 75	62 - 65 HRc	Ploughshare, cultivator shares, tines and shares for seed drill machines
CORODUR 65	63 - 65 HRc	Rotary harrow tines, rotor tines, cultivator tines, disc harrows
CORODUR 68	66 - 68 HRc	Rotary harrow tines, rotor tines, cultivators, well suited for extremely sandy soils
COROCARB Fe 60	Fe- C- Co- W – Matrix + 60% FTC (2400 HV _{0,2})	Ploughshare, cultivator shares, for extreme soil conditions
COROCARB Ni 60	Ni-B-Si-Matrix + 60% FTC (2400 HV _{0,2})	Ploughshare, cultivator shares (high corrosion protection)
COROCARB 610 PTA	38-40 % COROLOY 60 PTA + FTC	High wear protection even with a small layer thickness
COROCARB B	FTC: approx. 2360 HV _{0,4}) Ni-Cr-B-Si-Matrix: 420 - 450 HV _{0,1}	Ploughshare, cultivator shares



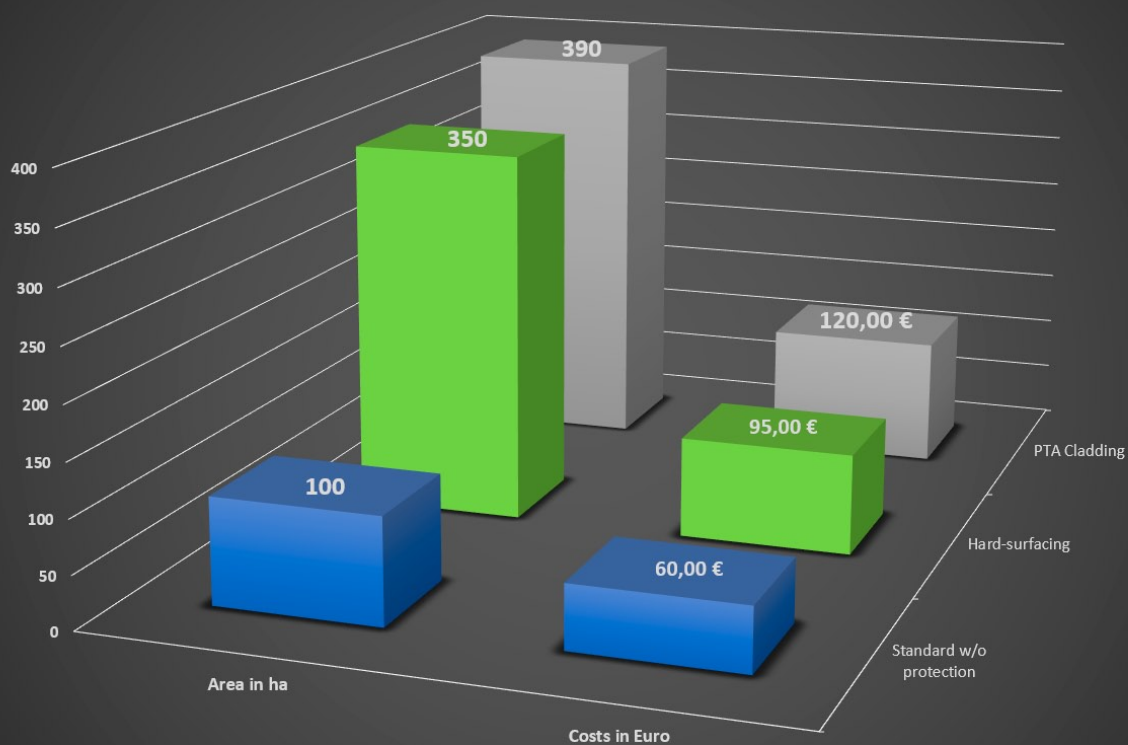
WHY COROCARB



COROCARB

Wear forces encountered during the extraction process cause extreme degradation of buckets, teeth, blades and transporting equipment, chutes, and more. Long downtimes for machinery repairs can cause unexpected costs. Corodur's specially developed tungsten carbide series called "COROCARB" are able to minimize this wear and reduce downtime. Understanding the effects of variable soil and rock compositions requires special geological and metallurgical skills. Our experts can analyze wear situations and recommend the right products from our wide range of Tungsten Carbide products.

Ploughshare efficiency compared to wear costs



TYPE OF WEAR PROTECTION AND COSTS PER SHARE



CORODUR
DAS ORIGINAL FÜLLDRAHT GMBH

CORODUR FÜLLDRAHT GMBH
Gießerallee 37
D - 47877 Willich

Telephone: +49 (0) 2154 8879-0
Fax: +49 (0) 2154 8879-79

info@corodur.de | www.corodur.de